



Corporate Overview

May 27, 2026

Forward-looking statements

Except for statements of historical fact, this presentation contains forward-looking statements (within the meaning of the federal securities laws) including statements related to future revenue, future earnings, and the success of our product releases, and the benefits and timing of the acquisition of Celestial AI that involve risks and uncertainties. Words such as “anticipates,” “expects,” “intends,” “plans,” “projects,” “believes,” “seeks,” “estimates,” “forecasts,” “targets,” “may,” “can,” “will,” “would” and similar expressions identify such forward-looking statements. These statements are not guarantees of results and should not be considered as an indication of future activity or future performance. Actual events or results may differ materially from those described in this presentation due to a number of risks and uncertainties.

Forward-looking statements are only predictions and are subject to risks, uncertainties and assumptions that are difficult to predict, including those described in the “Risk Factors” section of our Annual Reports on Form 10-K, Quarterly Reports on Form 10-Q and other documents filed by us from time to time with the SEC. Forward-looking statements speak only as of the date they are made. You are cautioned not to put undue reliance on forward-looking statements, and no person assumes any obligation to update or revise any such forward-looking statements, whether as a result of new information, future events or otherwise.

Overview

Company founded

1995

FY26 revenue

\$8.2B

Employees

8,000+

Patents worldwide

10,000+

Global fabless semiconductor supplier



 Nasdaq -100

Mission

We develop and deliver semiconductor solutions that **move, store, process and secure** the world's data faster and more reliably than anyone else.



Marvell data infrastructure end markets

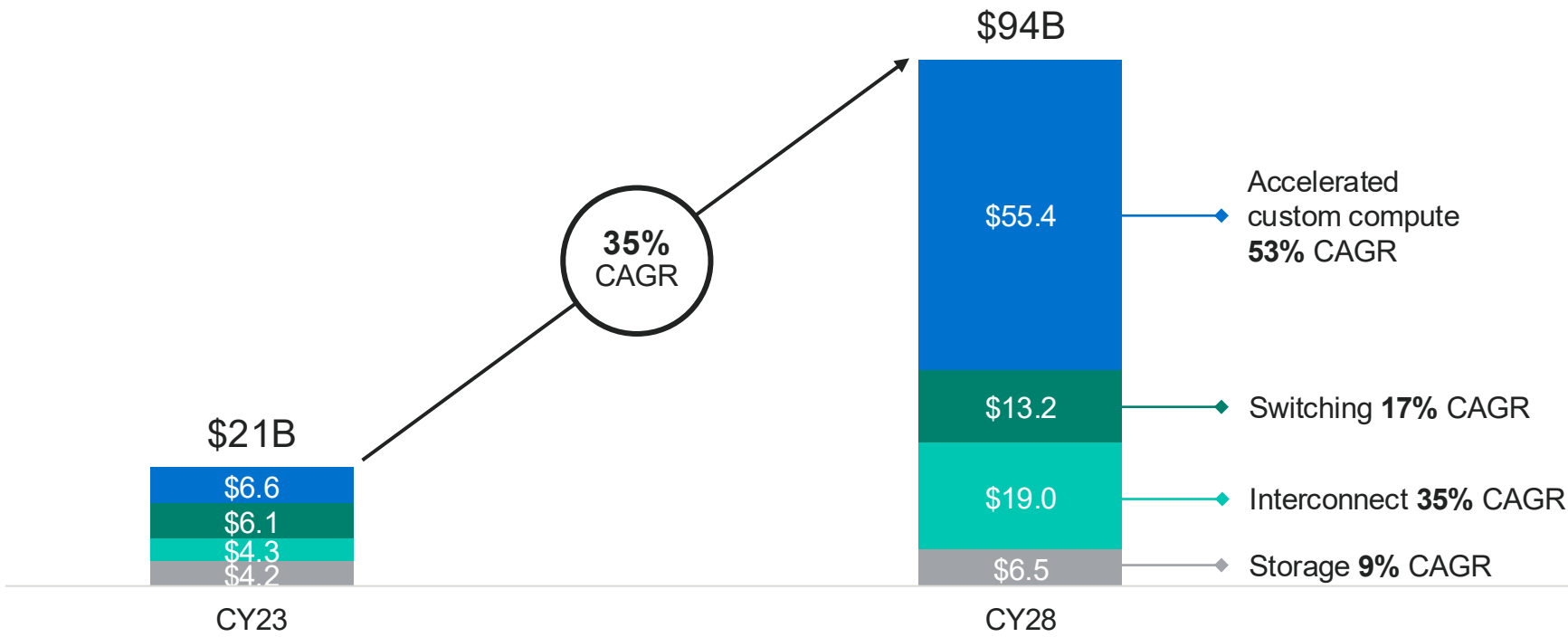


Data center



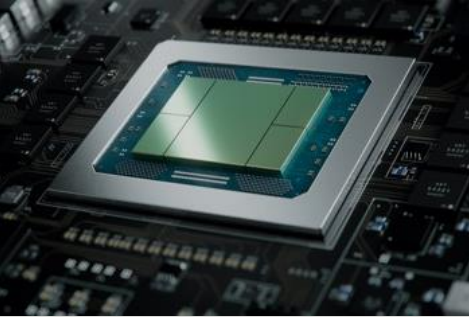
**Communications
and other**

Marvell data center market opportunity*



*As of Marvell Custom AI Investor Event, June 17, 2025
Source: 650 Group, CignalAI, Dell'Oro, LightCounting, and Marvell estimates

Data center portfolio



Custom

XPU |
XPU attach (NIC, CXL,
storage, security)



Interconnect

PAM, coherent, coherent-lite and
AEC DSPs | TIAs, drivers | DCI
modules | PCIe and Ethernet
retimers | Photonic Fabric™, CPO



Switching

Ethernet, PCIe and CXL switches
for scale-out, scale-up,
and memory fabrics



Storage

HDD and SSD controllers |
Storage and memory
accelerators

Scale-up opportunity

Scale-up domain must move beyond the rack

Copper hits reach, bandwidth limits

Requires purpose-built switch and optical fabric

Next-generation AI scale up



Multi-rack reach



Ultra-low latency



Very low power

Switch

Orchestrates
connectivity across
scale-up domain

Photonic Fabric™

Ultra high-bandwidth,
low latency, low power
multi-rack interconnect

Marvell[®] Photonic Fabric[™] technology platform

Photonic Fabric[™] scale-up network



- **30x** reach of passive copper
- **4x** bandwidth
- **4x** lower power
- **4x** lower latency
- **~1x** cost

Platform for multi-rack AI scale up

Communications and other portfolio



Compute

Wireless processors |
Networking processors



Interconnect

BASE-T PHYs |
High-speed Ethernet PHYs



Switching

Enterprise and industrial
Ethernet switches

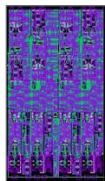


Security

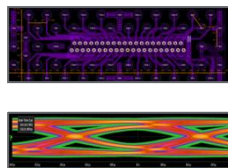
Hardware security modules |
Security processors

Essential silicon building blocks and IP

High-performance SerDes



Chip-to-chip (D2D) interconnect



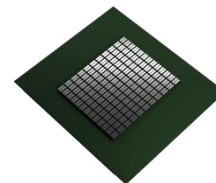
Ultra-high density and low-power SRAM



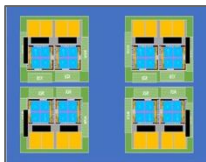
Custom HBM chiplet



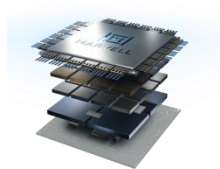
Package-integrated voltage regulation



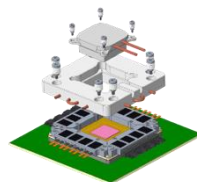
Advanced substrates



2.5D / 3D / 3.5D+ packaging



Advanced thermal solutions



3D SiPho integration

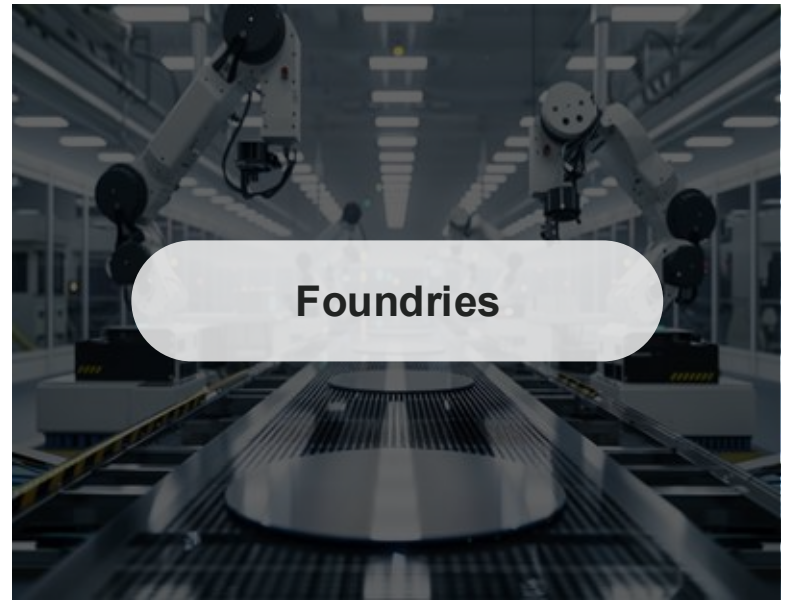
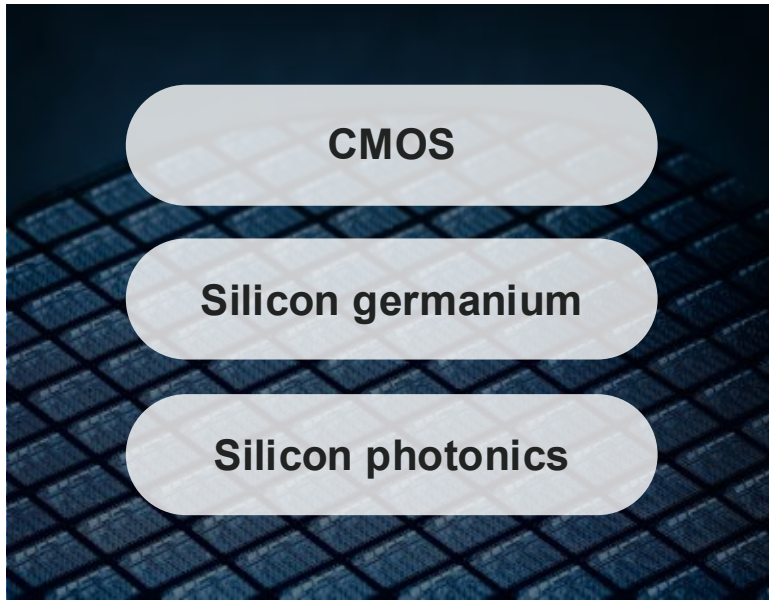


CPC/CPO



Pushing technology boundaries

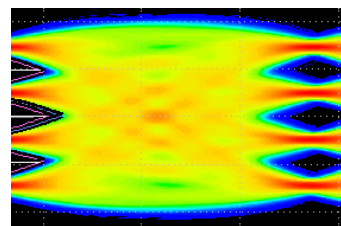
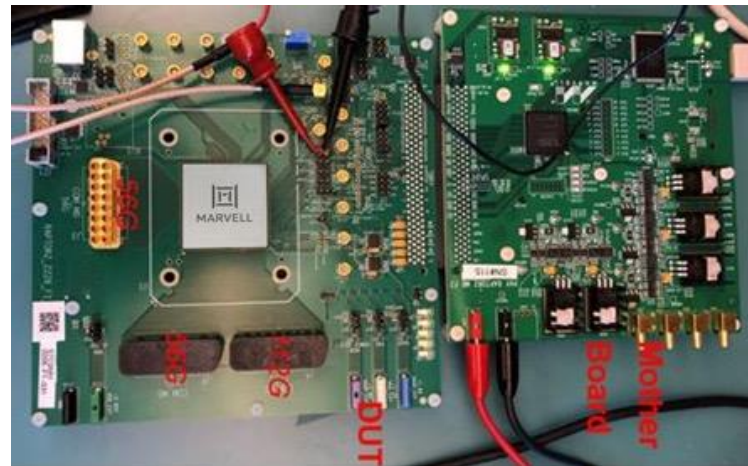
Marvell IP across process technologies



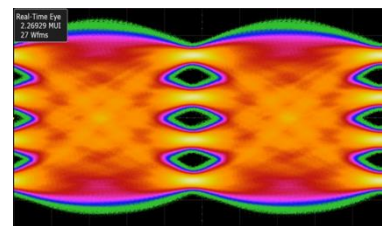
Process-agnostic. Foundry-ready. Future-proof.

Delivering leading 5nm, 3nm and 2nm process platforms

- Optimized power-efficiency
- High-bandwidth performance
- Hyper-density
- Low latency



128G core capable of >40 dB



224G core capable of >40 dB

Actively preparing for the Angstrom era

Flexible R&D models to satisfy customer needs

 Buy



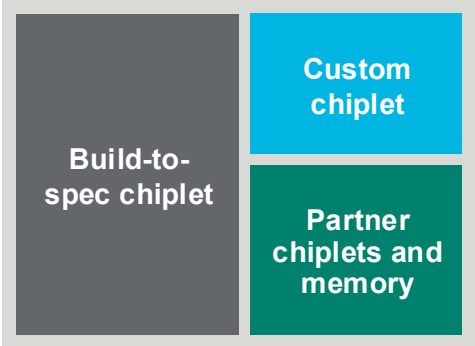
 Partner



 Build



 Integrate



Global presence



 Corporate offices

Proven leadership team



Matt Murphy
Chairman and
Chief Executive Officer

Joined: July 2016



Chris Koopmans
President and
Chief Operating Officer

Joined: June 2016



Sandeep Bharathi
President,
Data Center Group

Joined: February 2019



Mark Casper
Executive Vice President
and Chief Legal Officer

Joined: October 2021



Will Chu
Executive Vice President,
Custom Cloud Solutions
Business

Joined: August 2017



Janice Hall
Executive Vice President
and Chief Human
Resources Officer

Joined: January 2017



Gary Ignatin
Executive Vice President,
Corporate Development

Joined: February 2017



Dean Jarnac
Executive Vice President
and Chief Sales Officer

Joined: April 2017



David Lazovsky
Executive Vice President,
Data Center Networking
Business Group

Joined: February 2026



Willem Meintjes
Chief Financial Officer

Joined: June 2016



Noam Mizrahi
Executive Vice President
and Corporate Chief
Technology Officer

Joined: June 1998



Xi Wang
Senior Vice President,
Connectivity BU

Joined: April 2021



Recent announcements

APRIL 22, 2026

Marvell Announces Acquisition of Polariton Technologies, Advancing Optical Performance Scaling to 3.2T and Beyond

[NEWS LINK](#)

MARCH 31, 2026

NVIDIA AI Ecosystem Expands as Marvell Joins Forces Through NVLink Fusion

[NEWS LINK](#)

MARCH 17, 2026

Marvell Launches Next-generation CXL Switch, Enabling Memory Pooling to Break Through the AI “Memory Wall”

[NEWS LINK](#)

MARCH 17, 2025

Marvell Launches Industry’s First 260-lane PCIe 6.0 Switch for AI Data Center Scale-up Infrastructure

[NEWS LINK](#)

Recent announcements

MARCH 16, 2026

Marvell and Lumentum to Demonstrate Optical Circuit Switching for Next-generation AI Scale-up Infrastructure

[NEWS LINK](#)

MARCH 12, 2026

Marvell Ushers In the 1.6T Era with Expanded Optical DSP Platform Portfolio, Redefining AI Data Center End-to-End Connectivity

[NEWS LINK](#)

MARCH 12, 2026

Marvell and Mojo Vision Collaborate to Develop Next-generation, High-density Micro-LED Connectivity Solutions

[NEWS LINK](#)



Essential technology, done right™